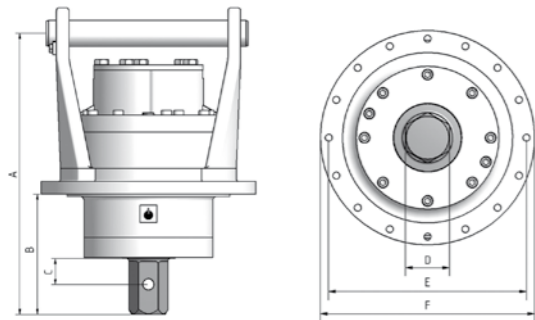
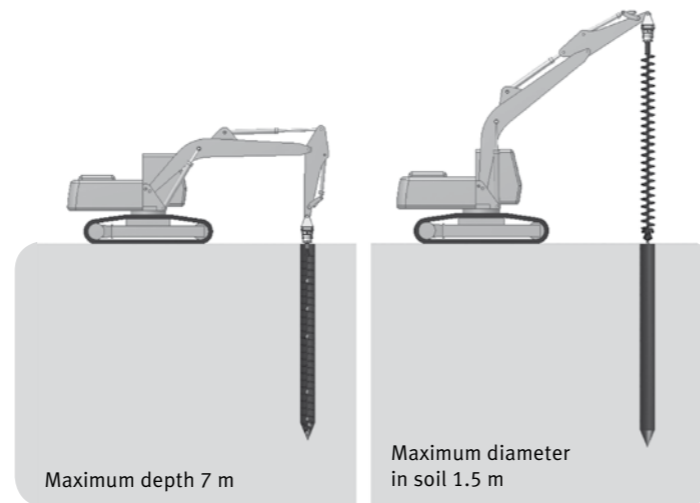


AUGER DRIVES

Auger drive attachment with augers

The EBA range of auger drive units allows you to convert your excavator, backhoe or skid steer into a drilling rig by simply changing the attachment on your machine.

These auger drive units are ideally suited for drilling holes in soft, sticky soils, loose stones and medium hard, compact rock with hardness up to 60 MPa. For drilling in medium hard rock, **erket** offers special drill bits that guarantee high drill speeds.



| TECHNICAL DATA | Units | EBA 500 | EBA 1000 | EBA 2300 |
|---|-------|---------|----------|----------|
| Maximum depth | m | 5 | 6 | 7 |
| Maximum diameter in soil | mm | 500 | 1,200 | 1,500 |
| - in soil with shale and clay | mm | 400 | 900 | 1,200 |
| - in soft rock | mm | 300 | 500 | 700 |
| Length of drive unit (A) | mm | 600 | 600 | 980 |
| B | mm | 275 | 275 | 605 |
| C | mm | 60 | 60 | 60 |
| D (hexagonal drive) | mm | 80 | 80 | 80 |
| Diameter of hole pattern in flange (E) | mm | 360 | 360 | 455 |
| Diameter of drive unit (F) | mm | 390 | 390 | 500 |
| Torque at 350 bar | Nm | 5,200 | 10,400 | 23,400 |
| Maximum oil flow | l/min | 85 | 150 | 300 |
| Minimum oil flow | l/min | 50 | 75 | 150 |
| Maximum rotation speed | rpm | 90 | 80 | 75 |
| Minimum rotation speed | rpm | 53 | 40 | 38 |
| Max. hydraulic operating pressure | bar | 350 | 350 | 350 |
| Weight excl. hydraulic hoses and adapter plate | kg | 160 | 180 | 360 |
| Rated power | kW | 45 | 65 | 110 |
| Recommended excavator, skid steer loader weight | t | 7 - 13 | 14 - 17 | 18 - 30 |

In contrast to many manufacturers in the market, **erket** does not use planetary gears in their auger drive units. **erket** auger drive units are fitted with short, compact, high torque, radial piston motors that are very robust. The reliability of the motors has been tried and tested all over the world in our rotary drum cutters.

- + exceptionally short and compact construction
- + strong hexagonal drive shaft
- + high torque hydraulic motor
- + robust and rigid suspension
- + heavy duty bearings
- + wear resistant augers
- + pilot bits for various drilling applications



Notes for drilling with erkat auger drive units: When mounted on an excavator arm, the augers are not supported in a feeder. Due to the natural curve of the excavator arm, augers can be bent during drilling. Therefore, special care must be taken to ensure that the augers are always working vertically. Only by keeping the auger in the vertical position can you guarantee a straight bore hole. Take great care to avoid bending the augers. Excessive bending of the auger can result in the hex drive breaking and damage to the auger drive. Select the auger rotation speed that corresponds to the auger diameter and material being drilled. Generally, rotation speeds should be lower for larger diameter augers or when drilling in harder material.